

PET Guided Omission of Radiotherapy in Intermediate-Stage Hodgkin Lymphoma: Final Results of the GHSG HD17 Study

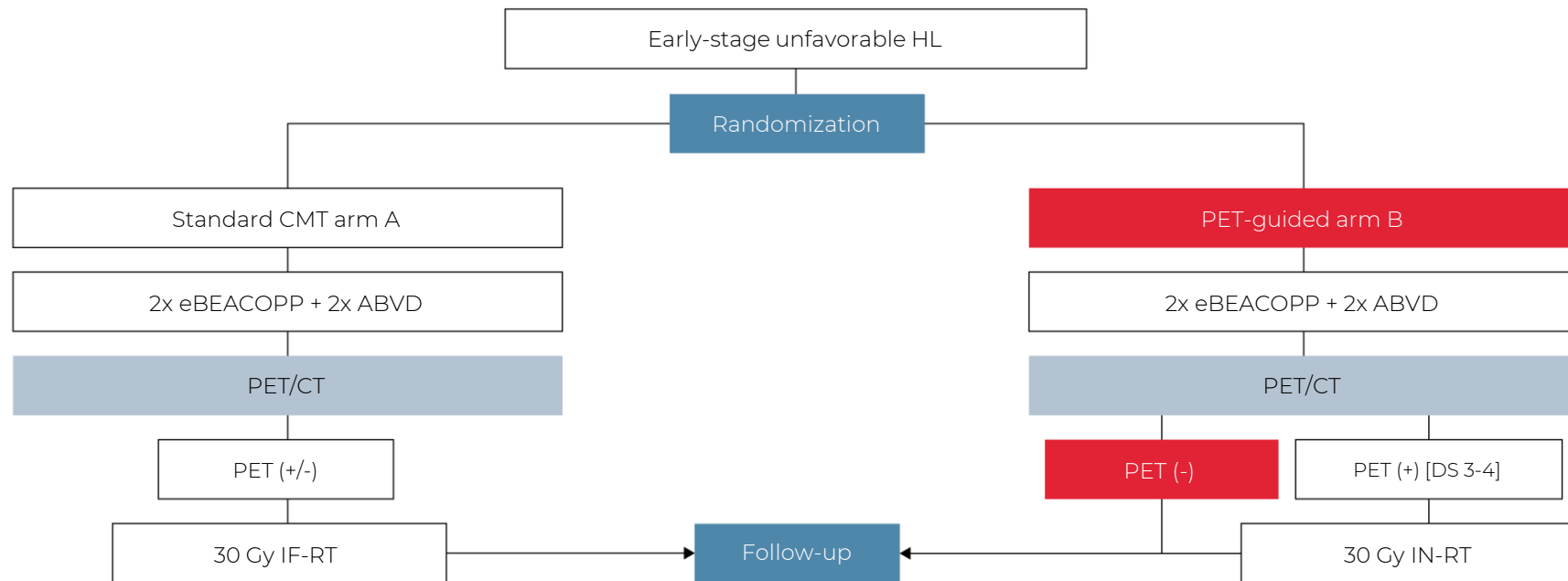
Peter Borchmann on behalf of the GHSG

1st Dept o Internal Medicine, University Hospital
Cologne, Cologne, Germany

June 12 2020
Presidential Symposium

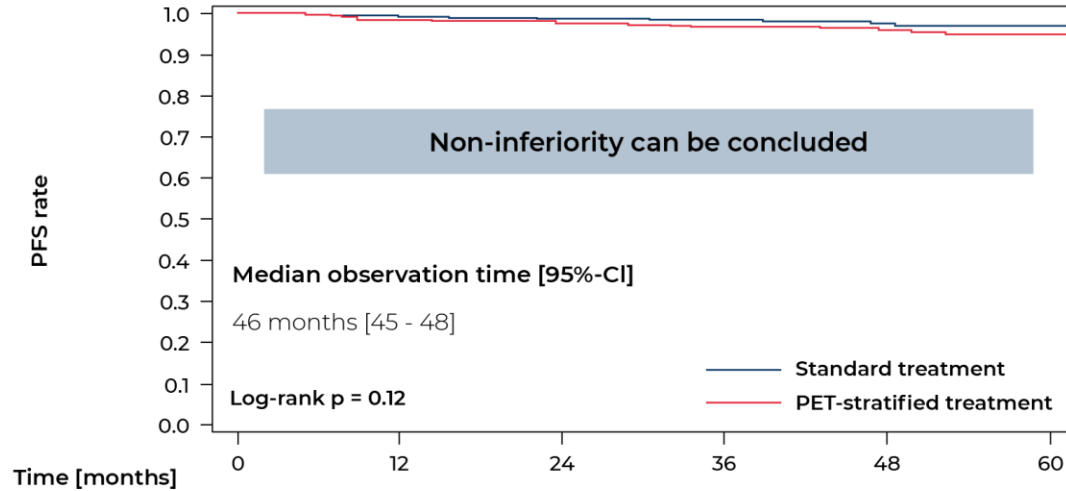


HD17 Trial Design



7 | GHSG HD17 final analysis | Peter Borchmann on behalf of the GHSG

HD17 Trial PET guided treatment non-inferior to CMT?



5-year PFS [95%-CI]

Arm A: 97.3% [94.5 - 98.7]

Arm B: 95.1% [92.0 - 97.0]

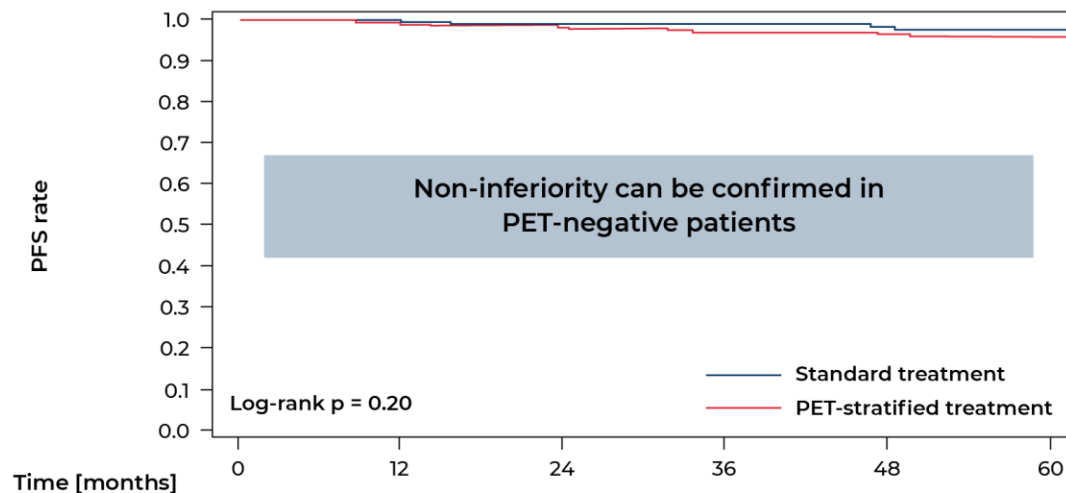
Difference in 5-year PFS [95%-CI]

2.2% [-5.3 - 0.9]

number at risk

428	404	363	293	189	111
477	453	400	320	219	120

HD17 Trial Sensitivity analysis in PET-negative patients

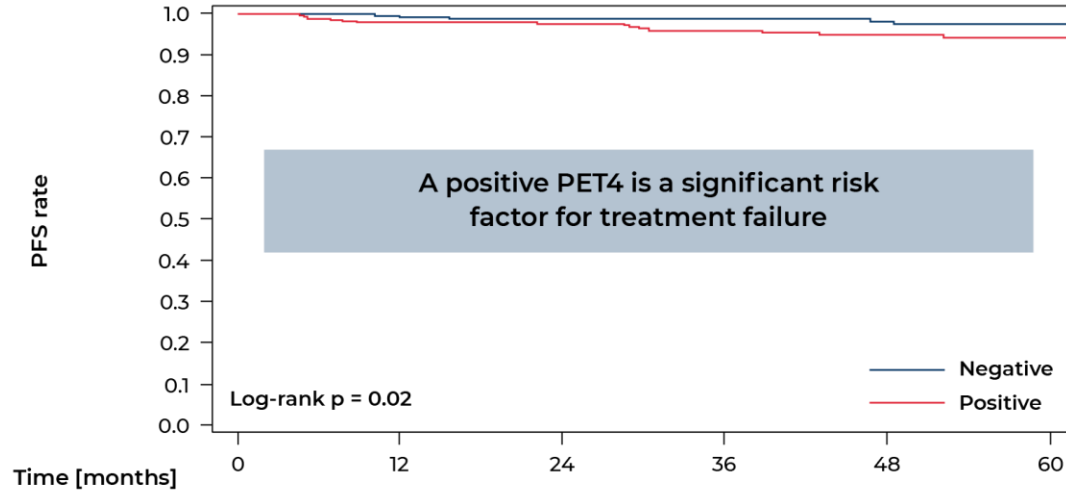


5-year PFS	[95%-CI]
Arm A: 97.7%	[93.6 – 99.2]
Arm B: 95.9%	[92.4 – 97.9]
Diff. in 5-year PFS	[95%-CI]
1.7%	[-5.3 – 1.8]

number at risk

274	259	234	191	125	72
323	308	278	227	156	86

HD17 Trial Is a positive PET a risk factor for PFS?



5-year PFS [95%-CI]

PET-negative: 97.6% [94.0 – 99.9]

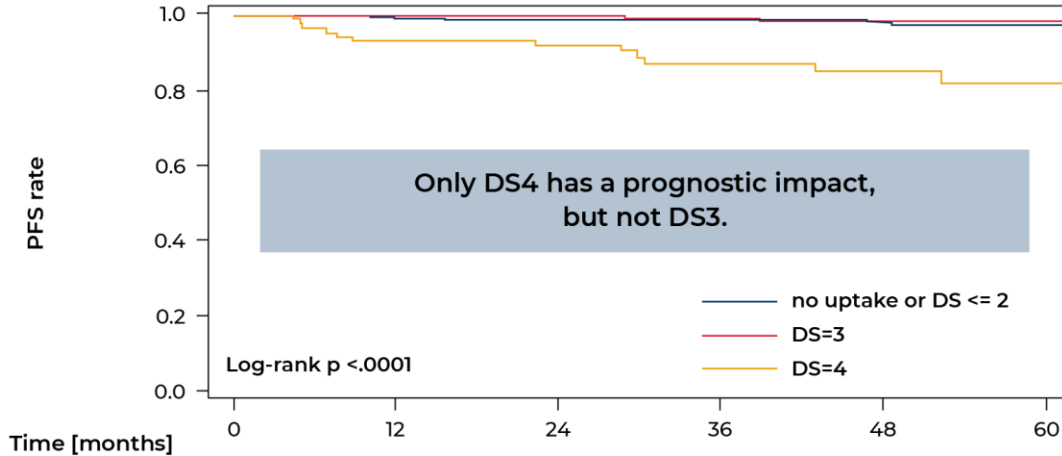
PET-positive: 94.2% [90.1 – 96.6]

Hazard Ratio 3.03 [1.10 – 8.3]

number at risk

318	292	259	211	139	77
328	306	264	204	135	75

HD17 Trial Prognosis per Deauville Score (DS)



5-year PFS

DS < 3: 97.6%

DS = 3: 98.8%

DS = 4: 81.6%

[95%-CI]

[94.0 – 99.0]

[95.0 – 99.7]

[67.9 – 89.9]

number at risk

	0	12	24	36	48	60
no uptake or DS ≤ 2	318	292	259	211	139	77
DS=3	238	225	196	156	104	57
DS=4	90	81	68	48	31	18